

the garden issue

Better Homes and Gardens.

APRIL 2012
BHG.COM

Beautiful Touches
for Every Room

Creative Ideas for
Spring Parties

Easter
Baking
Made
Simple

So Pretty, So Easy

Plant Now! Quick Color in Pots,
Step-by-Step Garden Plans,
plus the Best New Flowers & Veggies



Apple-green walls set off white lacquered cabinetry in the renovated kitchen of Leslie Huntley's Asheville, North Carolina, home.

Colorful Character

A small kitchen finds its happy place, opened up and splashed in lively colors.

BY JODY GARLOCK | PHOTOS ROB BRINSON
PRODUCED BY LISA MOWRY | STYLING ANNETTE JOSEPH

A peninsula serves as a social hub and buffet. Cabinets on both sides of the peninsula make up for storage space lost by removing some upper cabinets.



Find your ideal flooring!
Go to BHG.com/flooring to learn what material is best for you and get a flooring buying guide.

The ideas

FRESH INFLUENCE

Leslie modernized her 1906 bungalow for a look she calls “homey contemporary.” Removing a wall gave the cramped kitchen breathing space and brightened the dining room.

PERSONAL PALETTE

Leslie, a designer, pulled the palette from two of her favorite things: a red-framed poster with apple green and blue accents, and her collection of aqua-tinged jars.

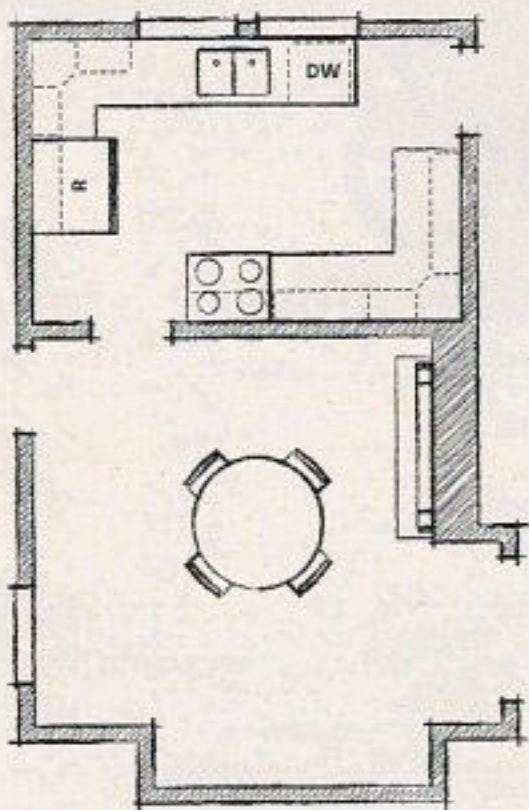
FIT AND TRIM

To replace the old wall-mount vent hood, Leslie chose a sleek, chimney-style hood, rather than a downdraft vent, and teamed it with a low-profile induction cooktop.

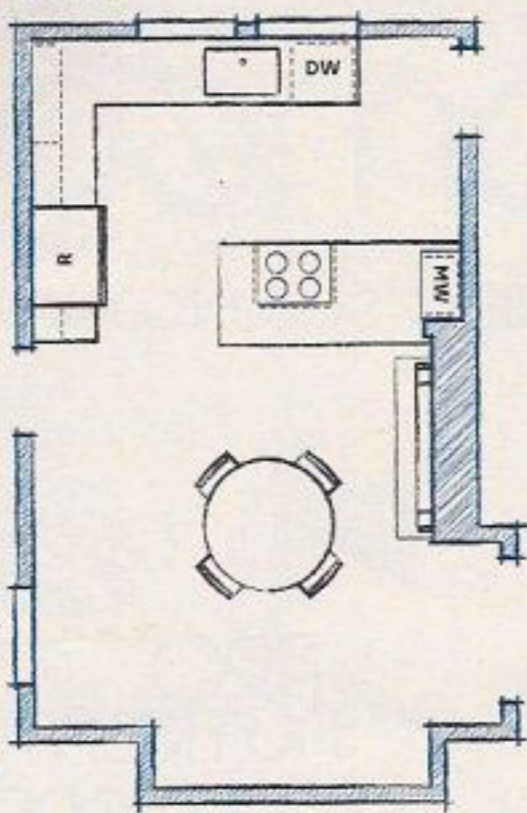
PERFECT PAIRING

A similar hue unites cork flooring in the kitchen and wood in the dining room. An area rug—made of self-sticking carpet tiles—makes the unmatched flooring less noticeable.

BEFORE



AFTER



The space

Removing a structural wall (and adding a support beam) opened the kitchen to the dining room, allowing the cabinet that houses the cooktop and oven to become a peninsula with two-sided storage. With the narrow doorway gone, a short bank of cabinets removed, and the refrigerator shifted over, the space seems larger and flows better.



The details

GROUT CLOUT

For the subway tile, Leslie chose dark gray grout to link to the countertops. "If I had used white grout, the backsplash and countertops would have read as totally separate," she says.

STRATEGIC STORAGE

Cabinet doors flanking the oven open to reveal pullout stainless-steel drawers sized for spices and cooking supplies. "It's a small kitchen, but it works really, really hard," Leslie says.

HIDDEN UTILITY

Now you see it, now you don't: The microwave tucks into a cabinet outfitted with a tambour door. But the view is always pretty thanks to glass shelves and a light in the cabinet.



Bring it home

Leslie chose this faucet, *above*, for its sleek design—just one countertop hole needed—and three-function spray head (Simplice, \$265; kohler.com). We also like the features of these high-arc options.



EASY USE

When you let go of this pull-down nozzle, *left*, it retracts automatically. Brantford, \$415; moen.com



HIDDEN ASSET

A pull-down spray wand tucks neatly inside this spout, *right*. Solna, \$399; brizo.com



CUSTOM HEIGHT

A button lets you change the height of this faucet, *above*, to fill pots. Elevate EXT, \$198; pfisterfaucets.com ■